

CURRENT ESTIMATED PRODUCTION LEAD TIMES

(Working days from start of production to ship date)

New or Changed			
Page	Section	Item	New or Changed

Non-Working Days	
When calculating the need date and last revision date (LRD), consider the following non-working day(s).	
Date	Location / Observance
05.28.18	All Sites – Office & factories closed for holiday observance
07.04.18	All Sites – Office & factories closed for holiday observance
09.03.18	All Sites – Office & factories closed for holiday observance
11.22.18 to 11.23.18	All Sites – Office & factories closed for holiday observance
12.24.18	Vinyl West Region (Portland) – Closed for holiday observance
12.25.18	All Sites – Office & factories closed for holiday observance

Table of Contents

[click on any heading to advance to that section]

Standard and Special Products

Architect Series® Reserve™ & Architect Series® Traditional	3
Architect Series® Contemporary.....	4
Designer Series®	4
Pella® 450 Series	5
Accessories.....	5
Insynctive®	5
Support Products	6
Metal.....	8
Encompass by Pella® Windows and Doors	9
Pella® 250 Series Windows	9
Pella® 350 Series Windows and Patio Doors	9
Pella® Impervia®	10
Pella® Fiberglass Resin Special Shapes	10
Entry Systems.....	11
Entry Systems – Wood	11
Storm Doors	11

Table of Contents (con't)

[click on any heading to advance to that section]

Catalog Custom and Commercial Products

Architect Series® Reserve™ & Architect Series® Traditional	13
Accessories / Obsolete Replacements	13
Commercial	14
Other	14

Service Parts

Replacement Assemblies	15
Encompass by Pella®	16
Pella® 250 Series Windows	16
Pella® 350 Series Windows and Patio Doors	16
Pella® Impervia®	16
Accessory Items	17
Sales Items	17

Custom & Large Quantity Order Guidelines

Wood Division Custom & Large Quantity Order	18
Pella® Impervia® Large Quantity Order	20
Pella® Fiberglass-Resin Special Shapes Large Quantity Order	21
Pella® Impervia® Large Job Process Map	22
Pella Vinyl Large Quantity Order	23

Standard and Special Products Wood

Architect Series® Reserve™ & Architect Series® Traditional		
Casement, Awning, and Fixed Units	Standard Lead Time	Rapid Response
Without Rolscreen / Clad Brickmould / custom color	9	3
With Rolscreen / Clad Brickmould / custom color	9	5
Interior Prime / Paint / Stain	9	5
Standard Combinations	9	5
Laminated Glazing (Impact, Laminated Annealed, Laminated Tempered)	16	14
Non-Pine	16	ASAP
Anodized Exterior Finish (Rectangles and Angle Tops)	32	32
Anodized Exterior Finish (Curved Tops)	47	47
Double Hung Units	Standard Lead Time	Rapid Response
Without Clad Brickmould / Enduraclad Plus / custom color	9	5
With Clad Brickmould / Enduraclad Plus / custom color	9	7
Interior Prime / Paint / Stain	9	5
Standard Combinations	9	5
Laminated Glazing (Impact, Laminated Annealed, Laminated Tempered)	16	14
Non-Pine	16	ASAP
Anodized Exterior Finish (Rectangles and Angle Tops)	32	32
Anodized Exterior Finish (Curved Tops)	47	47
Circlehead Units	Standard Lead Time	Rapid Response
Circlehead Units – Special Clad	9	5
Interior Prime	9	5
Interior Paint or Stain	9	5
Doors	Standard Lead Time	Rapid Response
Without special glazing / special color / special wall conditions / special size	9	5
With special glazing / special color / special wall conditions / interior prime & finish / special size	9	5
Curved Top Doors	9	5
Laminated Glazing (Impact, Laminated Tempered)	16	14
Non-Pine	16	ASAP
Interior Prime / Paint / Stain	9	5
With frame size attributes requiring Knock Down frame assembly	16	14
Anodized Exterior Finish (Rectangles and Angle Tops)	32	32
Anodized Exterior Finish (Curved Tops)	47	47
Scenescape® Multi-Panel	25	ASAP
Scenescape® Bifold – custom color	45	ASAP
Scenescape® Bifold – non-pine	37	ASAP
Scenescape® Multi-Slide & Lift-and-Slide – non-pine	32	ASAP

Other	Standard Lead Time	Rapid Response
Bays & Bows – Non Custom	9	7
Combinations	9	7

Architect Series® Contemporary		
Windows	Standard Lead Time	Rapid Response
Casement / Awning Units	9	5
Interior Prime / Paint / Stain	9	5
Units with custom color	9	7
Non-Pine	16	ASAP
Doors	Standard Lead Time	Rapid Response
Without accessories / special glazing / special size	9	5
With accessories / special glazing / special size	9	5
Interior Prime / Paint / Stain	9	5
Units with custom color	9	5
With frame size attributes requiring Knock Down frame assembly	16	14
Non-Pine	16	ASAP
Other	Standard Lead Time	Rapid Response
Combinations	9	7

Designer Series® [back to top]		
Windows	Standard Lead Time	Rapid Response
Casement / Awning Units	9	5
Double Hung Units	9	5
Interior Prime / Paint / Stain	9	5
Units with custom color	9	7
Units with Lami / Lexan glass	12	ASAP
Doors	Standard Lead Time	Rapid Response
Without accessories / special glazing / special size	9	5
With accessories / special glazing / special size	9	5
Interior Prime / Paint / Stain	9	5
Units with custom color	9	5
Scenescape® Multi-Panel	25	ASAP
Scenescape® Bifold – custom color	45	ASAP
Other	Standard Lead Time	Rapid Response
Bays & Bows – Non Custom	9	7
Standard 2, 3, and 4 wide composites	9	5
All other composites with a standard lead time of 9 days or less	9	7

Pella® 450 Series [back to top]		
Windows	Standard Lead Time	Rapid Response
Single Units – with or without special glazing	9	5
Double Hung and Casement Units – Prefinished	9	5
Large Fixed Units	9	5
Transoms	9	5
Interior Prime / Paint / Stain	9	5
Doors	Standard Lead Time	Rapid Response
Patio Doors – Standard	9	5
Interior Prime / Paint / Stain	9	5
Patio Door Accessories	9	3
Other	Standard Lead Time	Rapid Response
Bays & Bows	9	7
Combinations	9	7
GBG's	9	5
Hardware, Muntins, and Screens – Current Design	9	3
SDL's	9	5
Units with factory-applied special wall depths ¹	9	5

Accessories – Architect Series® Reserve™, Traditional, and Contemporary; Designer Series® [back to top]		
Blinds	Standard Lead Time	Rapid Response
Slimshade® Blinds – Fixed or Raise/Lower, out of unit	9	3
Shades	Standard Lead Time	Rapid Response
Shades – Fabric, out of unit	9	3
Grilles	Standard Lead Time	Rapid Response
Removable ¾" Rectangular Grilles – Unfinished, out of unit	9	2
Removable ¾" Rectangular Grilles – Painted / Stained, out of unit	9	3
Designer Series® Metal Grilles – Standard or Special Color, out of unit	9	5
Screens	Standard Lead Time	Rapid Response
Flat Screens – Fiberglass and Vivid View® – Standard Color, out of unit	9	3
Flat Screens – Fiberglass and Vivid View® – Feature / Special Color, out of unit	9	5
Flat Screens, Full – Fiberglass – Architect Series® Double Hung > 84", out of unit	9	5
Rolscreen® – Casement Windows, out of unit, also Rolscreen parts (Stained Rapid Response not available)	9	3
Rolscreen® - Doors, out of unit, also Rolscreen parts (Stained Rapid Response not available)	9	3

¹ Standard wall depths are 3-11/16, 4-9/16, and 6-9/16. All other are considered special wall depths.
Pella Corporation Confidential 4/2/2018 Page 5

Azek Trim	Standard Lead Time	Rapid Response
Assemblies	9	5
Catalog Part Numbers (lineal box quantities)	7	3
Exterior / Interior Wood Accessories	Standard Lead Time	Rapid Response
Premium Wood	16	14
Non-Premium Wood	7	3
Pine Interior Trim, Lineal – Unfinished / Prefinished	7	3
Pine Curved Interior Trim – Unfinished	9	5
Pine Curved Interior Trim – Prefinished	12	10
Pine Ready Trim – Assembled – Unfinished / Prefinished	9	7
Pine Ready Trim – Knockdown – Unfinished / Prefinished	7	3
Oak Interior Trim, Lineal – Unfinished	7	3
Oak Interior Trim, Lineal – Prefinished	10	7
Oak Curved Interior Trim – Unfinished	9	5
Oak Curved Interior Trim – Prefinished	16	10
Oak Ready Trim – Assembled and Knockdown – Unfinished	9	7
Oak Ready Trim – Assembled and Knockdown – Prefinished	16	10
Catalog Part Numbers	4	3
Other	Standard Lead Time	Rapid Response
All Other	7	3

Insynctive®		
Designer Series® Shading	Standard Lead Time	Rapid Response
Designer Series Motorized Shade	9	3
Designer Series Integrated Sensors	9	3
Designer Service Parts	3	n/a
Insynctive® Devices	Standard Lead Time	Rapid Response
Configured Parts	7	3
Service Parts (catalog parts)	3	n/a

Support Products [back to top]		
Curved Top Units / Combinations	Standard Lead Time	Rapid Response
LE 272 Annealed Glazing Only – without special color / accessories / interior finish	9	5
Annealed or Tempered Glazing – with special color / accessories	9	5
Impact Resistant Glazing – Clad Units only	16	14
Support Product Rectangle /Angle Top / Combinations	Standard Lead Time	Rapid Response
LE 272 Annealed Glazing Only – without special color / accessories / interior finish	9	5
Annealed or Tempered Glazing – with special color / accessories	9	5
Impact Resistant Glazing – Clad Units only	16	14
Spandrel Glazing – Clad Units only	35	ASAP
Anodized Exterior Finish (Rectangles and Angle Tops)	32	32
Glass	Standard Lead Time	Rapid Response
Annealed Laminated Glass and Solar Grey Glass	20	18
Tempered Laminated	27	25
Spandrel Glass	35	33
Impact Resistant Glazing	16	14
Other	Standard Lead Time	Rapid Response
Head Drip Fin – Curved	9	5
Premium Wood (Doug Fir, Alder, Mahogany)	16	ASAP

Metal [back to top]		
	Standard Lead Time	Rapid Response
Brickmould Clip	3	ASAP
Bow and Bay Mullions – White, Brown, Tan	9	3
Door Sill Support	3	3
Frame Expanders	9	5
Frame Expander Receptors	9	5
Frame Expanders – Curve Top	12	ASAP
Frame Expander Receptor Kits	9	5
Head Drip Cap, Straight White, Brown, Tan, Poplar White, Hartford Green, Putty	9	3
Head Drip Flashing – White, Brown, Tan	9	3
Mullion Cover – Clad Exterior, Standard Joining White, Brown, Tan, Poplar White, Hartford Green, Putty, Brick Red, Morning Sky Gray, Black, Hemlock	9	3
Paint Samples <i>(Your color match order will schedule a 50-day lead time for your sample to arrive. Once your approved sample & order is received by Pella, it will be rescheduled with the correct due date.)</i>	4	3
Standard Catalog Part Numbers	7	5
Touch-Up Paint	6	2
Traditional Trim – White, Brown, Tan	9	3
<i>All above items in a special color, unless otherwise noted</i>	9	5
Blue Fin	9	3
Brake Metal	9	5
Curved Extrusion – Custom	9	9
Extrusions – All Other	9	5
Frame Expander Receptor Kits	9	5
Hardware Packages	9	5
Rolled Coil Parts – All Other	9	5
Subframe	9	5
Anodized Exterior Finish (Rectangles and Angle Tops)	32	32
Anodized Exterior Finish (Curved Tops)	47	47

Standard and Special Products Vinyl

Encompass by Pella® Windows & Doors [back to top]		
	Standard Lead Time	Rapid Response
East Region (Gettysburg, Murray) – All orders, <i>except</i> Circlehead/Radius Special Shape – Windows – 1” GBG’s	6	ASAP
East Region (Gettysburg, Murray) – Circlehead/Radius Special Shape – Windows – 1” GBG’s	10	ASAP
West Region (Portland) – All orders, regardless of attributes	6	ASAP

Pella® 250 Series Windows² [back to top]			
	Standard Lead Time	DuraColor™ Ext Finish Std Lead Time	Rapid Response
Dual-Pane IG Units	8	18	ASAP
Triple-Pane IG Units	10	18	ASAP
High Altitude with Argon Dual-Pane IG Units	10	18	ASAP
Circlehead/Radius Special Shape – Windows – Block Frame, Nail Fin, 5/8” Flange, Double Wall Flush Flange	15	23	ASAP
Circlehead/Radius Special Shape – Windows – Nail Fin w/ J-Channel Frame – Dual IG	8	18	ASAP
Circlehead/Radius Special Shape – Windows – Nail Fin w/ J-Channel Frame – Triple IG; Dual IG High Altitude with Argon; Dual IG with 1” GBG’s	10	18	ASAP

Pella® 350 Series Windows & Doors² [back to top]			
	Standard Lead Time	DuraColor™ Ext Finish Std Lead Time	Rapid Response
Dual-Pane IG Units - Windows and Patio Doors	8	18	ASAP
Triple-Pane IG Units - Windows and Patio Doors	10	18	ASAP
High Altitude with Argon Dual-Pane IG Units - Windows and Patio Doors	10	18	ASAP
Rolscreen Patio Door Screen, out of unit	11	11	ASAP
Circlehead/Radius Special Shape - Double Wall Flush Flange Frame	15	23	ASAP
Circlehead/Radius Special Shape - Block, Nail Fin, Nail Fin w/ J Channel, 5/8" Flange Frames - Dual IG	8	18	ASAP

² Branches that receive shipments directly from the manufacturing plants in Murray (250 or 350 Series) and Gettysburg (250 Series) will receive a one day shorter lead time.

Circlehead/Radius Special Shape - Block, Nail Fin, Nail Fin w/ J Channel, 5/8" Flange Frames - Triple IG; Dual IG High Altitude with Argon; Dual IG with 1" GBG's	10	18	ASAP
Non-Impact Laminated IG Units - Single Hung, Casement, Awning, Fixed	15	23	ASAP
HurricaneShield Impact-Resistant IG Units - Windows and Patio Doors	15	23	ASAP

Standard and Special Products Fiberglass Composite

Pella® Impervia® [back to top]		
	Standard Lead Time	Rapid Response
Window and Patio Door Single Units	10	5
Fixed Frame Single Units	10	8
Most Window and Patio Door Combinations	12	ASAP
Window and Patio Door Combinations with Steel Reinforcement Mulls	18	ASAP
Laminated Glazing (Annealed or Tempered)	15	ASAP

Pella® Fiberglass-Resin Special Shapes [back to top]		
	Standard Lead Time	Rapid Response
All Single Units	10	ASAP
Laminated Glazing (Annealed or Tempered)	15	ASAP

Standard and Special Products Entry Systems

Entry Systems [back to top]		
Pella® and Architect Series® Entry Doors	Standard Lead Time	Rapid Response
Pella® and Architect Series® Entry Doors	9	6
With Mahogany Frame	16	13
Non-Standard Fiberglass Fire Doors ³	20	17
GBG Colors other than White / White	16	13
Encompass by Pella® Entry Doors	Standard Lead Time	Rapid Response
Encompass by Pella® Entry Doors	9	ASAP
Premium Wood Entry Doors	Standard Lead Time	Rapid Response
Wood Entry Doors – Unfinished	15	ASAP
Wood Entry Doors – Prefinished	25	ASAP
Wood Entry Door Accessories and Service Parts – Unfinished / Finish Not Req'd	10	ASAP
Wood Entry Door Accessories and Service Parts – Prefinished	25	ASAP
Wood Entry Door Handlesets	25	ASAP
Wood Entry Doors – All 32" and 42" Deco Glass including Half-Round and Elliptical Transoms	40	ASAP

Standard and Special Products Storm Doors

Storm Doors [back to top]		
	Standard Lead Time	Rapid Response
All Storm Doors	7	5

Hinged Screens		
	Standard Lead Time	Rapid Response
Standard Color Hinged Screens (White, Brown, Tan, Poplar White, Hartford Green, Black, Brick Red, Hemlock, Morning Sky Gray)	7	5
Custom Color Hinged Screens	12	ASAP

³ Standard fiberglass fire doors are: **Smooth:** (Sizes 32x80, 36x80) 2-Panel Arch, 6-Panel, Craftsman, Flush;
Oak: (Sizes 32x80, 36x80) 6-Panel

Additional Notes:

- 1) **Rapid Response Lead Time = ASAP:** Rapid Response is available on all items, however, the acknowledged lead time will show as standard in some cases. In all instances, the item marked rapid is moved to the front of the line and shipped out on the first available truck. In the majority of orders, this results in the product being delivered to the branch sooner than the standard lead time. All items that have a parent/child relationship will have an acknowledged lead time that shows as standard.
- 2) **Custom Ships:** Add one day to stated lead times.
- 3) The lead times stated in this section apply to order quantities that are within the non-custom Large Quantity Job Order Entry Guidelines. Refer to pages 17-19 for more information.

Catalog Custom and Commercial Products

Architect Series® Reserve, Traditional [back to top]		
Windows	Standard Lead Time	Rapid Response
Casement	9	7
French Casement	35	ASAP
Push-Out Casement – Narrow	16	ASAP
Push-Out Casement – Wide	30	ASAP
Push-Out French Casement – Traditional Style	35	ASAP
Inswing Casement	35	ASAP
Inswing French Casement	35	ASAP
Tilt Turn	35	ASAP
Hopper	35	ASAP
Circlehead	9	7
Double Hung	9	7
Anodized Exterior Finish (Rectangles and Angle Tops)	32	32
Anodized Exterior Finish (Curved Tops)	47	47
Doors	Standard Lead Time	Rapid Response
Hinged	9	7
Anodized Exterior Finish (Rectangles)	32	32

Accessories / Obsolete Replacements [back to top]		
Accessories	Standard Lead Time	Rapid Response
Curved Brickmould, Aluminum	26	24
Grilles (Standard and Colonial Profile)	9	5
Model 3 Simulated Hung Locks: Part ODJH0001, ODJHBZ00, ODJHP000 Brass, Oil Rubbed Bronze, and Satin Nickel finishes	14	12
Subframe, Curved	26	24
All Other Accessories / Replacement Parts	9	6
Anodized Exterior Finish (Rectangles and Angle Tops)	32	32
Anodized Exterior Finish (Curved Tops)	47	47
Obsolete Replacements	Standard Lead Time	Rapid Response
Obsolete Model 2 Residential and Commercial Hung Jambliners	9	6
Obsolete Large Double Hung Balances	35	33
Obsolete Large Double Hung and Designer Series® Sashes / DGP Double Hung Sashes	20	18
Designer Series DGP Obsolete Sashes and Panels	9	6

Commercial [back to top]		
Windows	Standard Lead Time	Rapid Response
Awning, Large	9	7
Clad Frame, Exterior Glazed	9	7
Monumental Hung (Standard Balance)	9	7
Monumental Hung (Upgraded Balance)	18	16
Anodized Exterior Finish (Rectangles and Angle Tops)	32	32
Anodized Exterior Finish (Curved Tops)	47	47
Doors	Standard Lead Time	Rapid Response
ASCOC Door	9	7
Anodized Exterior Finish (Rectangles)	32	32

Other [back to top]		
Glass	Standard Lead Time	Rapid Response
Solar Grey Glass	20	18
Annealed and Tempered Laminated Glass	16	14
Spandrel Glass	35	33
Impact Resistant Glazing	16	14
Other	Standard Lead Time	Rapid Response
Premium Wood Collection	16	ASAP
Prefinished White	9	ASAP

Additional Notes:

- 1) **Rapid Response Lead Time = ASAP:** Rapid Response is available on all items, however, the acknowledged lead time will show as standard. In all cases, the item marked rapid is moved to the front of the line and shipped out on the first available truck. In the majority of orders, this results in the product being delivered to the branch sooner than the standard lead time. All items that have a parent/child relationship will have an acknowledged lead time that shows as standard.
- 2) **Custom Ships:** Add one day to stated lead times.
- 3) The lead times stated in this section are for cataloged custom products. Quoted custom product lead times will be given at the time of quote.
- 4) The lead times stated in this section apply to order quantities that are within the Custom Large Quantity Job Order Entry Guidelines. Rectangular sashes and panels with curved glass are considered to be curved products. Refer to pages 16-19 for more information.

Service Parts

Replacement Assemblies [back to top]		
DGP, Replacement	Standard Lead Time	Rapid Response
Annealed, Tempered	9	3
Laminated	16	ASAP
Door Panels, Patio – Hinged and Sliding, Replacement	Standard Lead Time	Rapid Response
Interior Finish/ Special Glazings	7	6
Impact Resistant Glazing – Architect Series® Panels	16	14
Impact Resistant Glazing – Designer Series® Panels	25	ASAP
Anodized Exterior Finish (Rectangles and Angle Tops)	32	32
Anodized Exterior Finish (Curved Tops)	47	47
Entry Door – Architect Series®, Pella®, Encompass by Pella®	Standard Lead Time	Rapid Response
Panels and Sidelites	9	6
Replacement Glass	9	6
All other configured service parts	9	5
Entry Door – Model 1 and Model 2, Replacement	Standard Lead Time	Rapid Response
Panels and Sidelites	14	ASAP
Replacement Glass	14	ASAP
All other configured service parts	9	5
Glass, Replacement	Standard Lead Time	Rapid Response
Replacement Glass, Insulating	9	ASAP
Replacement Glass, Laminated	16	ASAP
Replacement Glass, Impact Resistant (Single and IG)	16	ASAP
Replacement Glass, Decorative	9	ASAP
Support Product Rectangle, Curved and Angle Top Replacement IG with GBG's	9	ASAP
Sash, Replacement	Standard Lead Time	Rapid Response
Without Special Color / Interior Finish / Special Glazings	9	5
With Special Color / Interior Finish/ Special Glazings	9	5
Impact Resistant Glazing – Architect Series	16	14
Impact Resistant Glazing – Designer Series	21	ASAP
Any species other than pine, unless another condition specf. longer lead time	16	ASAP
Anodized Exterior Finish (Rectangles and Angle Tops)	32	32
Anodized Exterior Finish (Curved Tops)	47	47

Encompass by Pella® Windows & Patio Doors [back to top]		
East and West Regions	Standard Lead Time	Rapid Response
All Encompass Installation Items	4	2
All Encompass Service Items except for items listed below (4)	4	2
Replacement Balances for previous vintage	4	ASAP
Replacement Sashes	3	ASAP
Replacement SDL's	6	ASAP
IG Units, Door Panels, and Door Screens	6	ASAP

Pella® 250 Series Windows [back to top]			
Windows	Standard Lead Time	DuraColor™ Ext Finish Std Lead Time	Rapid Response
All 250 service and installation items except for items listed below (2)	4	12	2
Replacement SDL's	7	15	ASAP
Replacement Sashes and IG	7	15	ASAP

Pella® 350 Series Windows & Doors [back to top]			
Windows	Standard Lead Time	DuraColor™ Ext Finish Std Lead Time	Rapid Response
All 350 service and installation items except for items listed below (2)	4	12	2
Dual-Pane Sashes and IG, Replacement SDL's, and Curved Extension Mould	7	15	ASAP
Triple-Pane, High Altitude & Argon Dual-Pane Sashes and IG	9	17	ASAP
Patio Doors	Standard Lead Time	DuraColor™ Ext Finish Std Lead Time	Rapid Response
All 350 service and installation items except for items listed below (5)	4	12	2
Door Screens	7	7	ASAP
Door Rolscreen® and Parts	9	9	ASAP
Dual-Pane Panels and IG, Replacement SDL's	7	15	ASAP
Triple-Pane, High Altitude & Argon Dual-Pane Panels and IG	9	17	ASAP
HurricaneShield® Impact Resistant Panels and IG	14	22	ASAP

Pella® Impervia® [back to top]		
	Standard Lead Time	Rapid Response
All Items	7	ASAP

Accessory Items [back to top]		
	Standard Lead Time	Rapid Response
Balances, Replacement – Architect Series Model 3, Designer Series Models 1 and 2, Designer Series with Hinged Glazing Panel	4	ASAP
Inventoried Service Items	3	ASAP
Premium Wood Accessory Items	16	ASAP
Slimshade® Blinds, Replacement	9	ASAP
Special Color Accessory Items	9	ASAP
Window Fashions Panel	14	ASAP

Sales Items [back to top]		
	Standard Lead Time	Rapid Response
Beam Splitter Glass	3	2
Color Chips, Shade, and Grille Samples	3	2
Window & Door Corner Sections – Architect Series, Designer Series	15	ASAP
Window & Door Corner Sections – Pella® 450 Series	10	ASAP
Entry Door 4x4 Grain / Stain Samples	15	ASAP
Entry Door Corner Sections	15	ASAP
Entry Door Sales Kits – Glass Kit	3	2
Entry Door Sales Kits – Standard Sales Kit	15	ASAP

Custom Product & Large Quantity Order Guidelines

Wood

(Last Updated: April 1, 2017)

[back to top]			
Casements, Awnings, and Large Awnings	Per Day	Per Week	Recommended per Line Item
Non-Pine Casements	20	100	10
Rectangular Casements, Awnings, and Large Awnings	20	100	10
Rectangular Casements and Awnings – Impact Resistant Glazing	10	50	10
Rectangular Casements, Awnings, and Large Awnings – Non-Rectangular Grilles	5	25	5
Archtop / Angle Top Casements	10	50	5
Archtop / Angle Top Casements – Non-Traditional Grilles	5	25	5
French Casements	1	5	5
Push-Out Casements – Narrow	5	25	5
Push-Out Casements – Wide	3	15	5
Push-Out French Casements	1	5	5
Inswing Casements	3	15	5
Inswing French Casements	1	5	5
Tilt Turn	3	15	5
Hopper	3	15	5
Bays & Bows	5	25	5
Double Hungs	Per Day	Per Week	Recommended per Line Item
Non-Pine Double Hungs	20	100	10
Rectangular Residential Single or Double Hungs	20	100	10
Rectangular Single or Double Hungs – Impact Resistant Glazing	10	50	10
Rectangular Monumental Hung	10	50	5
Rectangular Hung Products – Non-Rectangular Grilles	5	25	5
Archtop Hung Product	3	15	3
Bays & Bows	5	25	5
Support Products – Rectangle and Angle Top	Per Day	Per Week	Recommended per Line Item
Pine	40	200	10
Non-Pine	20	100	10
Exterior Glazed	10	50	10
With ILT (Traditional Pattern)	5	25	5
With ILT (Custom Pattern – Non-Traditional Patterns/Mixed Profiles)	See Custom Solutions quote – Custom Solutions will work with the plant to determine quantity per day/week/line item.		
With SDL	20	100	10

Support Products – Curved Top	Per Day	Per Week	Recommended per Line Item
Pine	20	100	5
Non-Pine Circleheads	10	50	5
With ILT	5	25	5
With SDL	5	25	5
Hinged Doors	Per Day	Per Week	Recommended per Line Item
Non-Pine Hinged Doors	10 panels	30 panels	5
Rectangular Inswing, Outswing, and Commercial Doors	10 panels	50 panels	5
Rectangular Doors – Non-Rectangular Grilles	5 panels	25 panels	5
Archtop Door	3 panels	15 panels	3
Sliding Doors	Per Day	Per Week	Recommended per Line Item
Non-Pine Sliding Doors	30 panels	30 panels	5
Pine Sliding Doors	30 panels	50 panels	5
With frame size attributes requiring Knock Down frame assembly	10 panels	30 panels	2
Accessories	Per Day	Per Week	Recommended per Line Item
Flat Screens, Full – Fiberglass – Architect Series® Double Hung > 84”, out of unit	25	125	5
1” Flat Screens (extruded and non-extruded)	25	125	5
Vivid View Flat Screens	25	125	5

Additional Notes:

- 1) When entering each individual customer order, the total quantity per category should not exceed the shipment quantities listed above (per day or per week).
- 2) If your customer needs cannot be met by following these quantity guidelines, please contact your Customer Support Specialist prior to order entry.
- 3) Please order any needed out-of-unit or installation accessories along with the corresponding units, in accordance with the above schedule.

Large Quantity Order Guidelines

Pella® Impervia®

(Last Updated: October 6, 2016)

[LINK to Impervia Large Job Order Line Items Calculator](#) (use MyPella.com login/password)

[LINK to Pella Commercial Large Job Checklist](#) (use MyPella.com login/password)

[LINK to Impervia Large Job Process Map](#)

[back to top]		
Windows	Per Week*	Recommended per Line Item
Double Hung	150	25
Single Hung, Sliding, and Fixed Window Single Units PQM reference – SW: double/triple sliders; Fixed Window: sash set non-casement 2-Wide, 3-Wide Composites/Integral Mulls counted as 2 or 3 units respectively	280	25
Double Hung, Single Hung, Sliding, and Fixed Window Value Add Combinations 2-Wide, 3-Wide, Transoms, Mixed Product, etc.	70	15
Casement and Awning Single Units (vent and fixed)	200	25
Casement and Awning Value Add Combinations 2-Wide, 3-Wide, 4-Wide, Mixed Product, etc.	50	15
Direct Set Fixed Frame 2-Wide, 3-Wide Composites/Integral Mulls counted as 2 or 3 units respectively	70	25
Direct Set Fixed Frame – Applied Grilles	40	20
Direct Set Fixed Frame – Open Glazed	100	25
Block Frame Units – Slide-In Fins For composites and combinations, count each single unit.	250	25
Two-Color Windows	80	25
Replacement Sash, Replacement IG	75	25
Screens – Out of Unit	250	50
Doors	Per Week*	Recommended per Line Item
Patio Doors	70	20
Patio Doors – Accessory Panels	40	20
Two-Color Doors	25	15
Screens – Out of Unit	40	20
<p><i>* The manufacturing and logistics systems are set-up to ship only complete lines on an order. For large orders, breaking up the individual lines to smaller, more manageable quantities allows the plants more flexibility in scheduling and increases the ability to ship items on their scheduled ship dates.</i></p>		

Additional Notes:

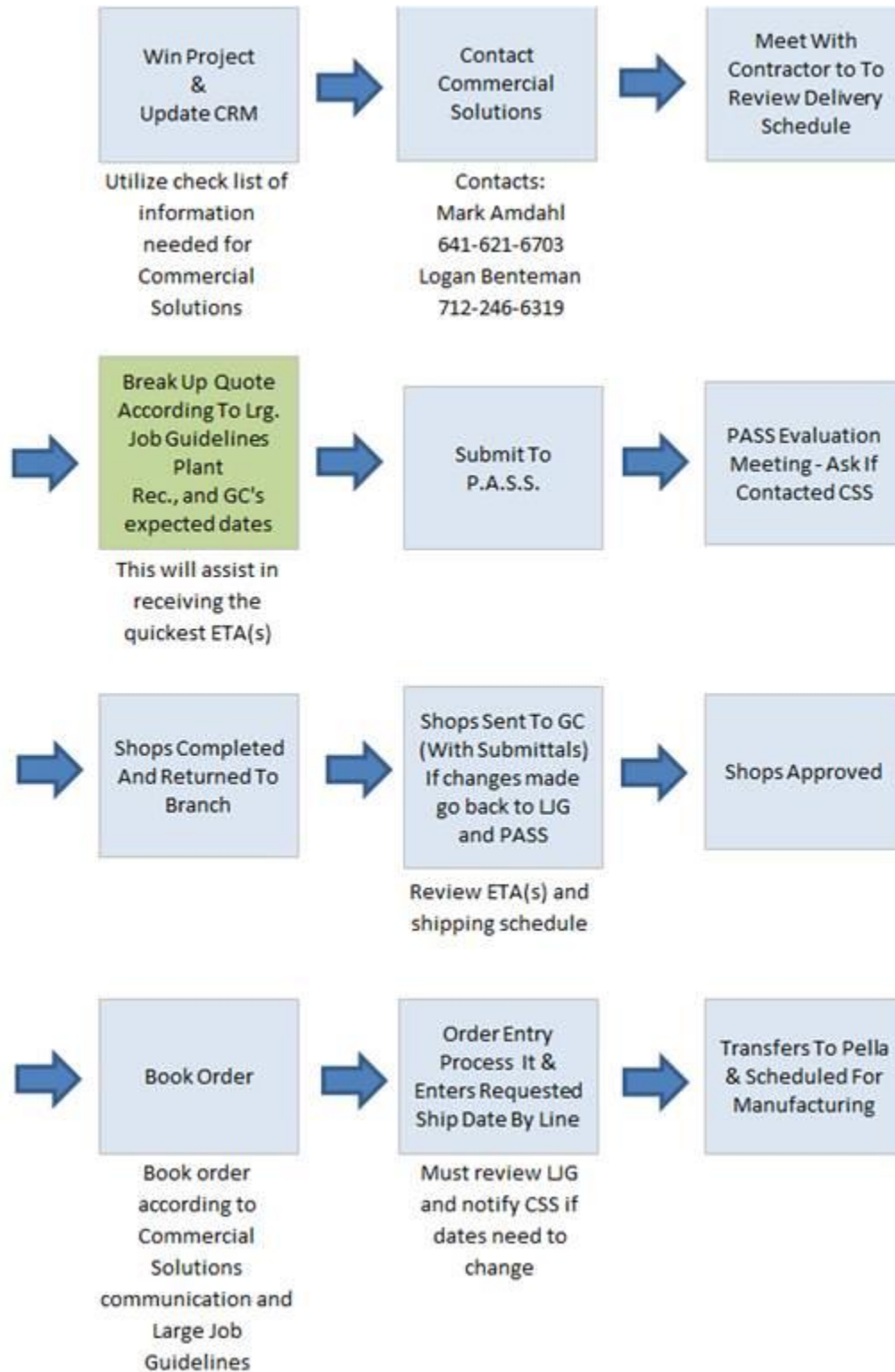
- 1) When entering each individual customer order, the total quantity per category should not exceed the shipment quantities listed above per week (recommend also limiting quantity per line item).
- 2) If the orders are larger than the stated guidelines, there is a possibility the plant may create new ship dates based on current plant capacity.
- 3) If, by following these quantity guidelines, your customer needs cannot be met, please contact your Customer Support Specialist prior to order entry.
- 4) Please order any needed out-of-unit or installation accessories along with the corresponding units, in accordance with the above schedule.

Large Quantity Order Guidelines Fiberglass Resin Special Shapes

(Last Updated: October 6, 2007)

[back to top]		
	Per Day	Per Week
Pella Fiberglass Resin Special Shapes	5	25

Ideal Impervia® Large Job Process Map



Large Quantity Order Guidelines

Pella Vinyl Products

(Last Updated: November 1, 2015)

[back to top]			
Encompass Windows	Vinyl East Per Week*	Vinyl West Per Week*	Recommended per Line Item
Double Hung	150	n/a	25
Single Hung, Sliding Window Single Units PQM reference – SW: double/triple sliders 2-Wide, 3-Wide Composites/Integral Mulls counted as 2 or 3 units respectively	150	75	25
Direct Set Fixed Windows (including shapes)	40	20	20
Double Hung, Single Hung, Sliding, and Fixed Window Value Add Combinations PQM reference – Direct Set: rectangle, curve top, and angle top 2-Wide, 3-Wide, Transoms, Mixed Product, etc.	40	20	10
Casement and Awning Single Units (vent and fixed)	40	20	20
Casement and Awning Value Add Combinations 2-Wide, 3-Wide, 4-Wide, Mixed Product, etc.	20	20	10
Replacement Sash, Replacement IG	75	25	25
Screens – Out of Unit	250	100	50
Encompass Doors	Per Week*		Recommended per Line Item
Patio Doors	50	25	25
250 Series Windows	Murray/G'burg Per Week*	Portland Per Week*	Recommended per Line Item
Double Hung, Single Hung, Sliding and Fixed Window Single Units 2-Wide, 3-Wide Composites/Integral Mulls counted as 2 or 3 units respectively	75	25	25
Double Hung, Single Hung, Sliding, and Fixed Window Value Add Combinations PQM reference – Direct Set: rectangle, curve top, and angle top 2-Wide, 3-Wide, Transoms, Mixed Product, etc.	25	10	10
Units with SDL Grilles	50	25	25
350 Series Windows	Per Week*		Recommended per Line Item
Casement and Awning Single Units (vent and fixed)	25		25
Double Hung, Single Hung, Sliding, and Fixed Window Value Add Combinations PQM reference – Direct Set: rectangle, curve top, and angle top 2-Wide, 3-Wide, Transoms, Mixed Product, etc.	75		25
Value-Add Combinations (all products)	25		25
Units with SDL Grilles	50		25

350 Series Doors	Vinyl East Per Week*	Vinyl West Per Week*	Recommended per Line Item
Patio Doors	20		10
<p><i>* The manufacturing and logistics systems are set-up to ship only complete lines on an order. For large orders, breaking up the individual lines to smaller, more manageable quantities allows the plants more flexibility in scheduling and increases the ability to ship items on their scheduled ship dates.</i></p>			

Additional Notes:

- 1) When entering each individual customer order, the total quantity per category should not exceed the shipment quantities listed above per week (recommend also limiting quantity per line item).
- 2) If the orders are larger than the stated guidelines, there is a possibility the plant may create new ship dates based on current plant capacity.
- 3) If, by following these quantity guidelines, your customer needs cannot be met, please contact your Customer Support Specialist prior to order entry.
- 4) Please order any needed out-of-unit or installation accessories along with the corresponding units, in accordance with the above schedule.